

LEGEND:

- = SURFACE HOLE LOCATION/PENETRATION POINT
- = LAST TAKE POINT/BOTTOM HOLE LOCATION
- ◇ = FIRST TAKE POINT
- ▲ = SECTION CORNERS LOCATED
- △ = SECTION CORNERS RE-ESTABLISHED (Not Set on Ground)
- * = PRODUCING WELLS
- ⊕ = ABANDONED WELLS
- = PROPOSED WELLS
- ▣ = PROPOSED BOTTOM HOLE
- = TAKE POINT
- = INJECTION WELLS

TRACT BREAKDOWN	
①	5 ACRES
②	5 ACRES
③	10 ACRES
④	50 ACRES
⑤	5 ACRES
⑥	5 ACRES
⑦	5 ACRES
⑧	20 ACRES
⑨	10 ACRES
⑩	30 ACRES
⑪	10 ACRES
⑫	5 ACRES
⑬	5 ACRES
⑭	5 ACRES
⑮	5 ACRES
⑯	10 ACRES
⑰	5 ACRES
⑱	5 ACRES
⑲	5 ACRES
⑳	5 ACRES
㉑	5 ACRES
㉒	15 ACRES
㉓	5 ACRES
㉔	5 ACRES
㉕	5 ACRES
㉖	30 ACRES
㉗	10 ACRES
㉘	20 ACRES
㉙	10 ACRES
TOTAL (ACREAGE SUPPLIED BY CENTENNIAL RESOURCE PRODUCTION, LLC)	310 ACRES

LINE TABLE		
LINE	DIRECTION	LENGTH
L1	S36°38'07"W	610.99'

DRIVING DIRECTIONS

BEGINNING AT THE INTERSECTION OF I-20 & HWY 285 IN PECOS, TEXAS PROCEED IN A WESTERLY DIRECTION ALONG U.S. 20 APPROXIMATELY 1.8 MILES TO THE JUNCTION OF THIS ROAD AND EXIT 39 FOR TX-17 TO THE WEST. TURN RIGHT AND PROCEED IN A WESTERLY DIRECTION APPROXIMATELY 0.2 MILES TO THE JUNCTION OF THIS ROAD AND I-20 SERVICE ROAD TO THE WEST. TURN LEFT AND PROCEED IN A WESTERLY DIRECTION APPROXIMATELY 0.4 MILES TO THE JUNCTION OF THIS ROAD AND TX-17 TO THE SOUTHWEST. TURN LEFT AND PROCEED IN A SOUTHWESTERLY DIRECTION APPROXIMATELY 16.2 MILES TO THE JUNCTION OF THIS ROAD AND COUNTY ROAD 112 TO THE SOUTHEAST. TURN LEFT AND PROCEED IN AN SOUTHEASTERLY, THEN SOUTHWESTERLY DIRECTION APPROXIMATELY 4.3 MILES TO THE JUNCTION OF THIS ROAD AND AN EXISTING ROAD TO THE SOUTH. PROCEED IN A SOUTHWESTERLY DIRECTION APPROXIMATELY 1.7 MILES TO THE JUNCTION OF THIS ROAD AND AN EXISTING ROAD TO THE NORTHWEST. TURN RIGHT AND PROCEED IN A NORTHWESTERLY DIRECTION APPROXIMATELY 1.3 MILES TO THE JUNCTION OF THIS ROAD AND AN EXISTING ROAD TO THE NORTHEAST. TURN RIGHT AND PROCEED IN A NORTHEASTERLY DIRECTION APPROXIMATELY 210' TO THE BEGINNING OF THE PROPOSED ACCESS ROAD TO THE NORTHWEST; FOLLOW ROAD FLAGS IN A NORTHWESTERLY DIRECTION APPROXIMATELY 1,083' TO THE PROPOSED LOCATION.

TOTAL DISTANCE FROM PECOS, TEXAS TO THE PROPOSED LOCATION IS APPROXIMATELY 25.1 MILES.

SW Cor. Sec. 214, 1/2" Iron Rod, 1/4" Cap
 N78°02'30"W
 5298.67' (Meas.)

GEODESIC DISTANCE

SURFACE LOCATION IS APPROXIMATELY 19.0 MILES SOUTHWESTERLY OF PECOS, TEXAS.



NAD 83 (SHL/PP)	SURVEY PERP.	NAD 83 (FTP)	SURVEY PERP.	NAD 83 (LTP/BHL)	SURVEY PERP.
LATITUDE = 31°09'07.08" (31.151968°)	455' FSL	LATITUDE = 31°09'02.24" (31.150623°)	100' FNL	LATITUDE = 31°08'13.21" (31.137003°)	100' FSL
LONGITUDE = 103°32'39.53" (103.544314°)	2576' FEL	LONGITUDE = 103°32'43.74" (103.545484°)	2449' FWL	LONGITUDE = 103°32'56.00" (103.548888°)	2449' FWL
STATE PLANE NAD 83 (TX CENTRAL)	LEASE PERP.	STATE PLANE NAD 83 (TX CENTRAL)	LEASE PERP.	STATE PLANE NAD 83 (TX CENTRAL)	LEASE PERP.
Y: 10391195.21' X: 1292329.30'	N/A	Y: 1039616.93' X: 1291949.35'	100' FNL	Y: 10391796.07' X: 129074.150'	100' FNL
UTM, NAD 83 (ZONE 13)		UTM, NAD 83 (ZONE 13)	191' FEL	UTM, NAD 83 (ZONE 13)	187' FEL
Y: 11310200.16' X: 2095647.94'		Y: 11309706.37' X: 2095288.43'		Y: 11304739.37' X: 2094288.41'	

REV: 1 11-21-19 C.D. (TRACT INFORMATION CHANGE & UPDATE EXISTING WELLS)

- NOTES:**
- Distances referenced on plat to section lines and lease lines are perpendicular.
 - Basis of Bearings is a Transverse Mercator Projection with a Central Meridian of W103°53'00"
 - All bearings, distances & areas shown are Surface Measure.
 - Uintah Engineering and Land Surveying does not attest to the validity of data/documents furnished by others.
 - Abstract 1605 is represented on this plat to reflect information from the R/C and does not reflect current Texas GLO records.

UELS, LLC
 Regional Office • 606 US Highway 385 N
 Seminole, TX 79360 • (432) 955-6100
 Corporate Office • 85 South 200 East
 Vernal, UT 84078 • (435) 789-1017

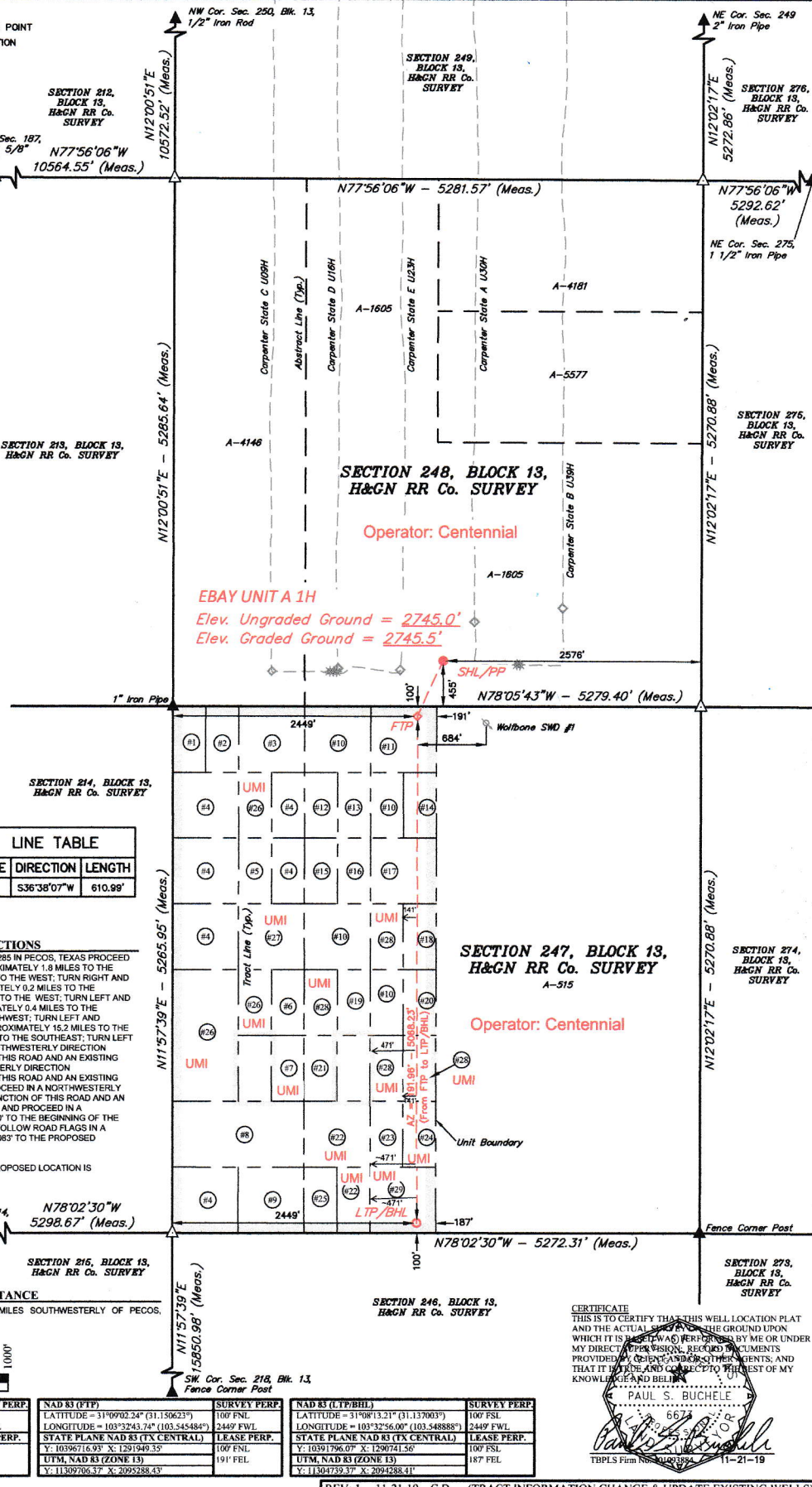


CENTENNIAL RESOURCE PRODUCTION, LLC

EBAY UNIT A 1H
 455' FSL 2576' FEL
 SECTION 248, BLOCK 13, H&GN RR Co. SURVEY
 REEVES COUNTY, TEXAS

SURVEYED BY	S.L. C.H.	10-24-19	SCALE
DRAWN BY	D.J.S.	11-04-19	1" = 1000'

WELL LOCATION PLAT



CERTIFICATE
 THIS IS TO CERTIFY THAT THIS WELL LOCATION PLAT AND THE ACTUAL SURFACE OF THE GROUND UPON WHICH IT IS BASED WAS PERFORMED BY ME OR UNDER MY DIRECT SUPERVISION, RECORDED DOCUMENTS PROVIDED BY RELEVANT INTERESTS, AND THAT IT IS TRUE AND CORRECT TO THE BEST OF MY KNOWLEDGE AND BELIEF.

PAUL S. BUCHELE
 SURVEYOR

TBPLS Firm No. 00293884 11-21-19