

TRACT BREAKDOWN	
#1	30 ACRES
#2	5 ACRES
#3	5 ACRES
#4	5 ACRES
#5	5 ACRES
#6	5 ACRES
#7	5 ACRES
#8	5 ACRES
#9	5 ACRES
#10	10 ACRES
#11	5 ACRES
#12	5 ACRES
#13	10 ACRES
#14	5 ACRES
#15	20 ACRES
#16	25 ACRES
#17	5 ACRES
#18	5 ACRES
#19	40 ACRES
#20	5 ACRES
#21	5 ACRES
#22	10 ACRES
#23	5 ACRES
#24	5 ACRES
#25	5 ACRES
#26	5 ACRES
#27	40 ACRES
#28	10 ACRES
#29	5 ACRES
#30	10 ACRES
#31	10 ACRES
TOTAL (ACREAGE SUPPLIED BY CENTENNIAL RESOURCE PRODUCTION, LLC)	315 ACRES

- LEGEND:**
- = SURFACE HOLE LOCATION/PENETRATION POINT
 - = LAST TAKE POINT/BOTTOM HOLE LOCATION
 - ◇ = FIRST TAKE POINT
 - △ = SECTION CORNERS LOCATED
 - ▲ = SECTION CORNERS RE-ESTABLISHED (Not Set on Ground)
 - * = PRODUCING WELLS
 - ⊕ = ABANDONED WELLS
 - = PROPOSED WELLS
 - ▣ = PROPOSED BOTTOM HOLE
 - = TAKE POINT
 - ◇ = INJECTION WELLS

DRIVING DIRECTIONS
 BEGINNING AT THE INTERSECTION OF I-20 & HWY 285 IN PECOS, TEXAS PROCEED IN A WESTERLY DIRECTION ALONG U.S. 20 APPROXIMATELY 1.8 MILES TO THE JUNCTION OF THIS ROAD AND EXIT 39 FOR TX-17 TO THE WEST; TURN RIGHT AND PROCEED IN A WESTERLY DIRECTION APPROXIMATELY 0.2 MILES TO THE JUNCTION OF THIS ROAD AND I-20 SERVICE ROAD TO THE WEST; TURN LEFT AND PROCEED IN A WESTERLY DIRECTION APPROXIMATELY 0.4 MILES TO THE JUNCTION OF THIS ROAD AND TX-17 TO THE SOUTHWEST; TURN LEFT AND PROCEED IN A WESTERLY DIRECTION APPROXIMATELY 15.2 MILES TO THE JUNCTION OF THIS ROAD AND COUNTY ROAD 112 TO THE SOUTHWEST; TURN LEFT AND PROCEED IN AN SOUTHWESTERLY DIRECTION APPROXIMATELY 4.3 MILES TO THE JUNCTION OF THIS ROAD AND AN EXISTING ROAD TO THE SOUTH; PROCEED IN A SOUTH-WESTERLY DIRECTION APPROXIMATELY 1.7 MILES TO THE JUNCTION OF THIS ROAD AND AN EXISTING ROAD TO THE NORTHWEST; TURN RIGHT AND PROCEED IN A NORTH-WESTERLY DIRECTION APPROXIMATELY 1.3 MILES TO THE JUNCTION OF THIS ROAD AND AN EXISTING ROAD TO THE NORTHEAST; TURN RIGHT AND PROCEED IN A NORTHEASTERLY DIRECTION APPROXIMATELY 210' TO THE BEGINNING OF THE PROPOSED ACCESS ROAD TO THE NORTHWEST; FOLLOW ROAD FLAGS IN A NORTH-WESTERLY DIRECTION APPROXIMATELY 1,083' TO THE PROPOSED LOCATION.

TOTAL DISTANCE FROM PECOS, TEXAS TO THE PROPOSED LOCATION IS APPROXIMATELY 25.1 MILES.

GEODESIC DISTANCE
 SURFACE LOCATION IS APPROXIMATELY 19.0 MILES SOUTHWESTERLY OF PECOS, TEXAS.

SW Cor. Sec. 214, 1/2" Iron Rod w/Cap
 N78°02'30"W
 5298.67' (Meas.)

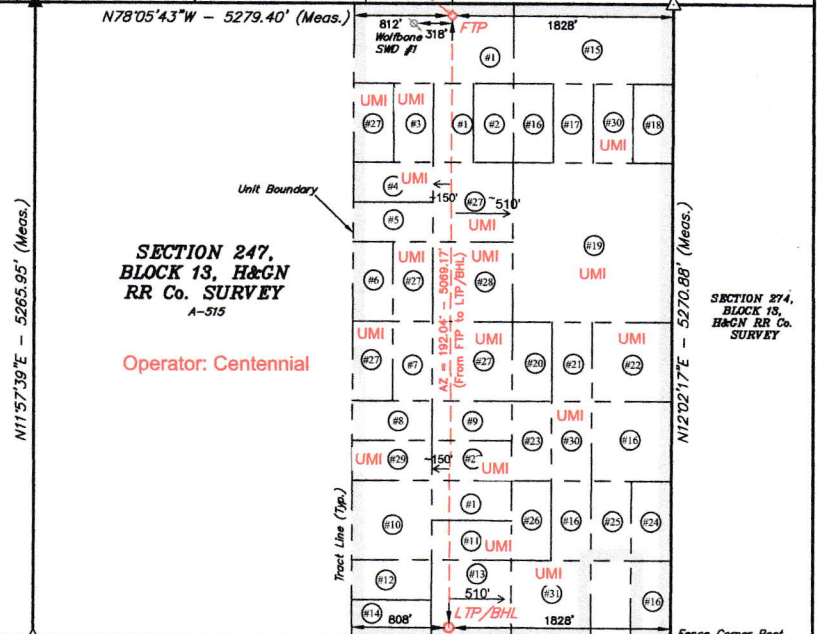
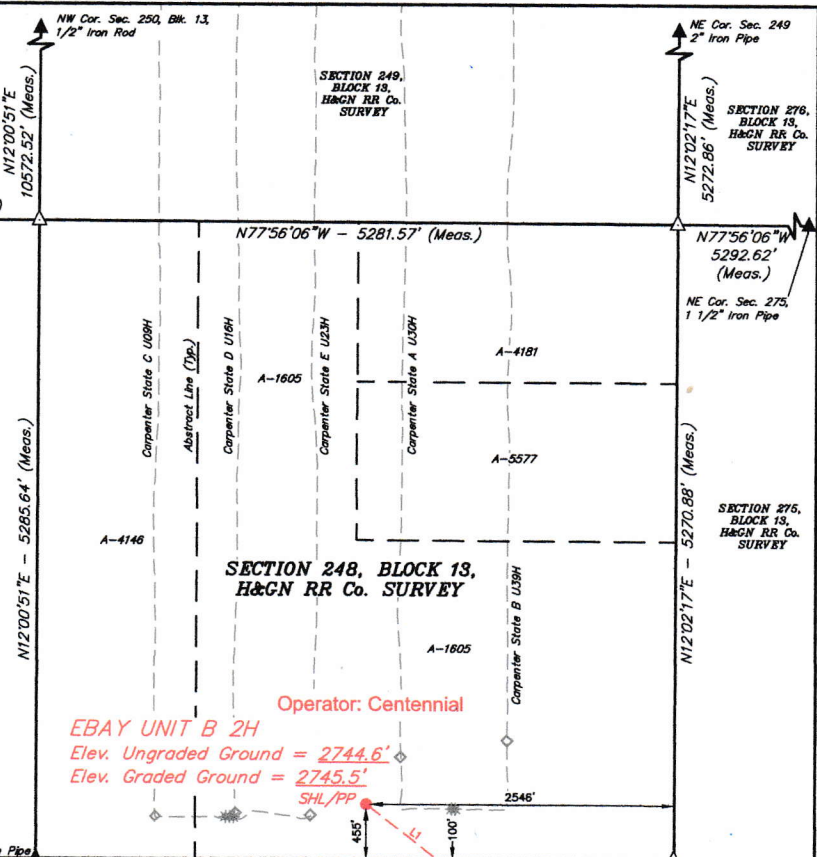
LINE	DIRECTION	LENGTH
L1	S40°20'58"E	906.32'

NAD 83 (SBL/PP)	SURVEY PERP.	NAD 83 (FTP)	SURVEY PERP.	NAD 83 (LTP/BHL)	SURVEY PERP.
LATITUDE = 31°09'07.02" (31.151950°)	453 FSL	LATITUDE = 31°09'00.17" (31.150046°)	100 FNL	LATITUDE = 31°08'11.14" (31.136428°)	100 FSL
LONGITUDE = 103°23'29.19" (103.394220°)	2546 FEL	LONGITUDE = 103°23'22.46" (103.394235°)	1828 FEL	LONGITUDE = 103°32'44.80" (103.545778°)	1828 FEL
STATE PLANE NAD 83 (TX CENTRAL)	LEASE PERP.	STATE PLANE NAD 83 (TX CENTRAL)	LEASE PERP.	STATE PLANE NAD 83 (TX CENTRAL)	LEASE PERP.
Y: 10397187.96 X: 1292358.40	N/A	Y: 1039166479.04 X: 1292922.70	100 FNL	Y: 10391558.90 X: 1291708.08	100 FSL
UTM, NAD 83 (ZONE 13)		UTM, NAD 83 (ZONE 13)	812 FWL	UTM, NAD 83 (ZONE 13)	808 FWL
Y: 11310191.14 X: 209567.32		Y: 11304599.38 X: 2096270.86		Y: 11304543.00 X: 2095263.98	

NOTES:

- Distances referenced on plat to section lines and lease lines are perpendicular.
- Basis of Bearings is a Transverse Mercator Projection with a Central Meridian of W103°53'00"
- All bearings, distances & areas shown are Surface Measure.
- Uintah Engineering and Land Surveying does not attest to the validity of data/documents furnished by others.
- Abstract 1605 is represented on this plat to reflect information from the RRC and does not reflect current Texas GLO records.

UELS, LLC
 Regional Office • 606 US Highway 385 N
 Seminole, TX 79360 • (432) 955-6100
 Corporate Office • 85 South 200 East
 Vernal, UT 84078 • (435) 789-1017



CERTIFICATE
 THIS IS TO CERTIFY THAT THIS WELL LOCATION PLAT AND THE ACTUAL SURVEY OF THE GROUND UPON WHICH IT IS BASED WAS PERFORMED BY ME OR UNDER MY DIRECT SUPERVISION, ACCORDING TO THE METHODS PROVIDED BY GEODESIC SURVEYING AGENTS, AND THAT IT IS TRUE AND CORRECT TO THE BEST OF MY KNOWLEDGE AND BELIEF.

PAUL S. BUCHELE
 6673
 Uintah Engineering and Land Surveying, LLC
 TBPLS Firm No. 12-18-19

REV: 3 12-18-19 T.A. (UPDATE LEASE INFO)

CENTENNIAL RESOURCE PRODUCTION, LLC

EBAY UNIT B 2H
 455' FSL 2546' FEL
 SECTION 248, BLOCK 13, H&GN RR Co. SURVEY
 REEVES COUNTY, TEXAS

SURVEYED BY	S.L. C.H.	10-24-19	SCALE
DRAWN BY	D.J.S.	11-04-19	1" = 1000'

WELL LOCATION PLAT